



# Hitzer

**AMERICAN MADE STOVES**  
**AMISH CRAFTSMANSHIP**





## HAND-FIRED STOVES


**MODEL 254**

- Hand-fired stove
- Multiple alternative fuel capabilities
- Cast iron grates & removable ash pan
- Radiant or Blower option
- Operates without electricity
- Thermostatically controlled


**MODEL 354**

- Large hand-fired stove
- Multiple alternative fuel capabilities
- Cast iron grates & removable ash pan
- Radiant or Blower option
- Operates without electricity
- Thermostatically controlled


**MODEL 55**

- Traditional Hitzer hand-fired stove
- Multiple alternative fuel capabilities
- Cast iron grates & removable ash pan
- Radiant stove
- Operates without electricity
- Thermostatically controlled


**MODEL 82**

- Original Hitzer hand-fired stove
- Multiple alternative fuel capabilities
- Cast iron grates & removable ash pan
- Radiant stove
- Operates without electricity
- Thermostatically controlled

## HOPPER STOVES


**E-Z FLO MODEL 30-95**

- Gravity Flow Hopper Stove with removable hopper for alternative fuels
- Radiant or Blower option
- Cast iron grates & removable ash pan
- Operates without electricity
- Thermostatically controlled


**E-Z FLO MODEL 50-93**

- Gravity Flow Hopper Stove with removable hopper for alternative fuels
- Radiant or Blower option
- Cast iron grates & removable ash pan
- Operates without electricity
- Thermostatically controlled


**MODEL 608 STOKER**

- Efficient and technologically advanced free standing stove
- Digital Coal-trol thermostat
- Variable speed blower and burner system
- Can be power vented (no chimney required)
- Large ash pan for multiple day ash storage


**MODEL 710 STOKER**

- Use as a standalone furnace or furnace add-on
- Efficient and technologically advanced furnace
- Digital Coal-trol thermostat
- Variable speed blower and burner system
- Can be power vented (no chimney required)
- Large ash pan for multiple day ash storage



## FURNACE STOVES



### MODEL 55 FURNACE

- Use as a standalone furnace or add-on
- Multiple alternative fuel capabilities
- Large blower capacity for even heat distribution
- Cast iron grates & removable ash pan
- Thermostatically controlled
- Optional Filter Box



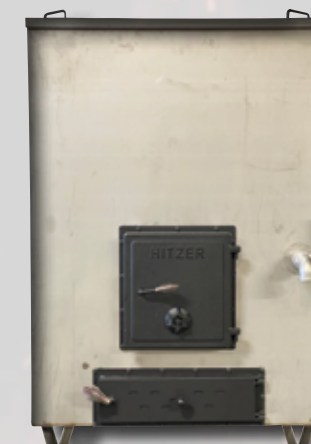
### MODEL 82 FURNACE

- Use as a standalone furnace or add-on
- Multiple alternative fuel capabilities
- Large blower capacity for even heat distribution
- Cast iron grates & removable ash pan
- Thermostatically controlled
- Optional Filter Box

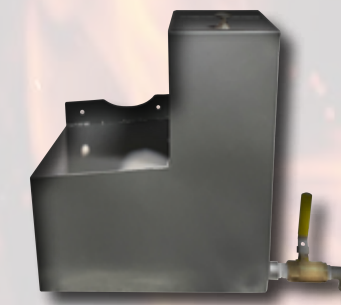
## HOT WATER



### 33 GALLON



### 80 & 100 GALLONS



### ADD-ON WATER TANK

Alternative Fuel Hot Water Tanks & Canners make a great product to have hot water while requiring no electricity. Hitzer hot water stove products are available in 33 gallon, 80 gallon, 100 gallon, or a 13 gallon stove add-on. With no electricity required, these tanks can utilize wood or coal to sustain hot water temperatures for extended periods of time. These hot water tanks are a fan favorite for those with off-grid lifestyles and agriculture barns with hot water access. These tanks are also favorites for canners and maple syrup makers. With a thermostatically controlled fire box, this system can be regulated and hold temperatures for extended periods of time.

## FIREPLACE INSERTS



### MODEL 983

- Hand-fired fireplace insert
- Multiple size fuel capabilities
- Cast iron grates
- Removable ash pan



### E-Z FLO MODEL 503 HOPPER

- Gravity Flow Hopper Insert
- Cast iron grates
- Removable ash pan

## ACCESSORIES



### ASH TOTES

- Steel construction with closeable lid
- Made to fit three different sizes:
  - Small fits 55 & 82 stoves
  - Medium fits 30-95, 254, 503, and 983 stoves
  - Large fits 50-93 and 354 stoves



### HOT WATER COILS

- Both small and large sizes available



OUTDOOR



FIRE PIT & GRILL

- Size 26” x 26”
- Multiple cooking options
- Built in footrest
- Heavy duty accessories



CUSTOM FIRE PIT

- Custom name, logo, or design
- 24” round fire pit



MODERN & MOBILE FIRE PIT

- Versatile & fully collapsible
- Can be taken anywhere
- Optional cooking grates
- Heavy duty construction



ROUND STAINLESS STEEL HANGING GRILL

- Available for the fire pit and grill
- Adjustable cooking heights
- Large cooking surface or use crane hook as kettle holder



SQUARE STAINLESS STEEL GRILL

- Available for the fire pit and grill
- Adjustable cooking heights
- Large Cooking Surface

PRODUCT DETAILS

| MODEL                | BTU OUTPUT | SQ. FT. HEAT CAPACITY | FIREBOX SIZE | BLOWER   | HOPPER STORAGE | FUEL       | WATER COIL   | HEIGHT IN. | DEPTH IN. | WIDTH IN. |
|----------------------|------------|-----------------------|--------------|----------|----------------|------------|--------------|------------|-----------|-----------|
| 503 FIREPLACE INSERT | 100,000    | 3,000                 | 1.3 CU. FT.  | YES      | 30 LB.         | ANTHRACITE | NO           | 24         | 25        | 30        |
| 983 FIREPLACE INSERT | 100,000    | 3,000                 | 3.5 CU. FT.  | YES      | NO             | MULTI-FUEL | NO           | 24         | 25        | 32        |
| 50-93 EZ FLO         | 100,000    | 3,000                 | 1.9 CU. FT.  | OPTIONAL | 50 LB.         | ANTHRACITE | YES OPTIONAL | 34.5       | 21        | 30        |
| 30-95 EZ FLO         | 65,000     | 1,800                 | 1.0 CU. FT.  | OPTIONAL | 30 LB.         | ANTHRACITE | YES OPTIONAL | 34         | 19.5      | 24.5      |
| 354                  | 100,000    | 3,000                 | 1.9 CU. FT.  | OPTIONAL | NO             | MULTI-FUEL | YES OPTIONAL | 36         | 21        | 30        |
| 254                  | 75,000     | 2,000                 | 1.3 CU. FT.  | OPTIONAL | NO             | MULTI-FUEL | YES OPTIONAL | 34.5       | 19.5      | 24.5      |
| 82 UL                | 125,000    | 3,000                 | 3.7 CU. FT.  | NO       | NO             | MULTI-FUEL | YES OPTIONAL | 42         | 28        | 20        |
| 82 FA FURNACE        | 125,000    | 3,500                 | 3.7 CU. FT.  | YES      | NO             | MULTI-FUEL | YES OPTIONAL | 48         | 30        | 25        |
| 55 UL                | 75,000     | 1,800                 | 2.5 CU. FT.  | NO       | NO             | MULTI-FUEL | YES OPTIONAL | 37.5       | 26        | 17        |
| 55 FA FURNACE        | 75,000     | 2,000                 | 2.5 CU. FT.  | YES      | NO             | MULTI-FUEL | YES OPTIONAL | 44         | 26        | 22        |
| 608 STOKER           | 90,000     | 3,000                 | N/A          | YES      | 90 LB.         | ANTHRACITE | YES OPTIONAL | 39         | 28        | 25.25     |
| 710 STOKER FURNACE   | 150,000    | 3,500                 | N/A          | YES      | 160 LB.        | ANTHRACITE | YES OPTIONAL | 44         | 42        | 27.5      |

QUALITY  
COMFORT  
EFFICIENCY  
VALUE







**Hitzer.com** 

269 East Main Street  
Berne, IN 46711

PHONE: 260-589-8536

FAX: 260-589-3538

EMAIL: [info@hitzer.com](mailto:info@hitzer.com)

**RELIABLE  
INDIVIDUALLY BUILT  
DURABLE  
VALUED CRAFTSMANSHIP**